

COLS81

slimline column speaker for speech
70/100V



COLS81 is an extra slim column speaker that is especially suitable for sound reproduction in acoustically difficult venues.

Advanced technology guarantees optimized sound dispersion and improved speech intelligibility. This decreases microphone feedback in reverberant locations such as houses of worship, sport facilities, public buildings as well as conference facilities and auditoriums.

This speaker offers timeless design combined with impeccable sound reproduction.

The COLS81 has 8 x 2" woofers and 1 x 1" tweeter. A standard wall bracket and installation tools are included.

The COLS81 loudspeakers can be painted in any colour.

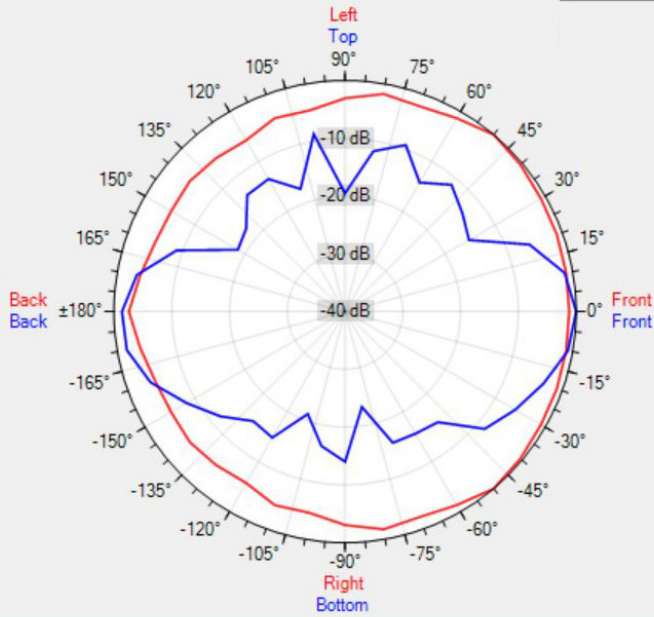
TECHNICAL SPECIFICATIONS

height in mm	614	width in mm	66
depth in mm	66	loudspeaker system	multiple
woofer size in inch	8 x 2	woofer cone material	coated paper
tweeter size in inch	1	mounting system	L-brackets
colour	white	100V transformer power taps in watts	30 - 15 - 6
70V transformer power taps in watts	30 - 15 - 6 - 3	impedance (ohms)	16
low impedance dynamic power in watts	40	low impedance RMS power in watts	30
SPL 1W/1m in dB	96	max SPL 1m in dB	104
frequency response in Hz	220 - 20K	main construction material	aluminium
grille main material	aluminium	IP rating	
Horizontal dispersion angle 1000 Hz	180°	Vertical dispersion angle 1000 Hz	50°
closest RAL colour (subject to deviations)	RAL9016	Net weight product (kg)	2.9

POLAR PLOTS

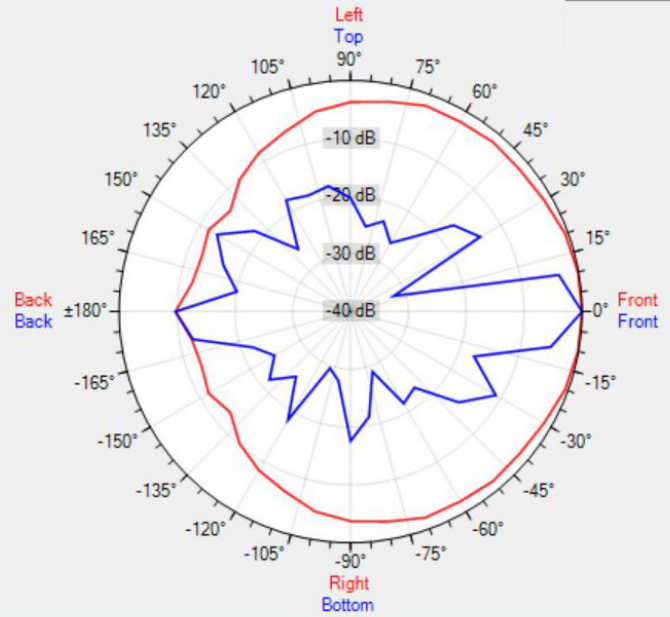
Data Shown: COLS81 (Apart Audio)
Display Parameters: Frequency: 1000Hz (1/24th Octave)

Horizontal
Vertical



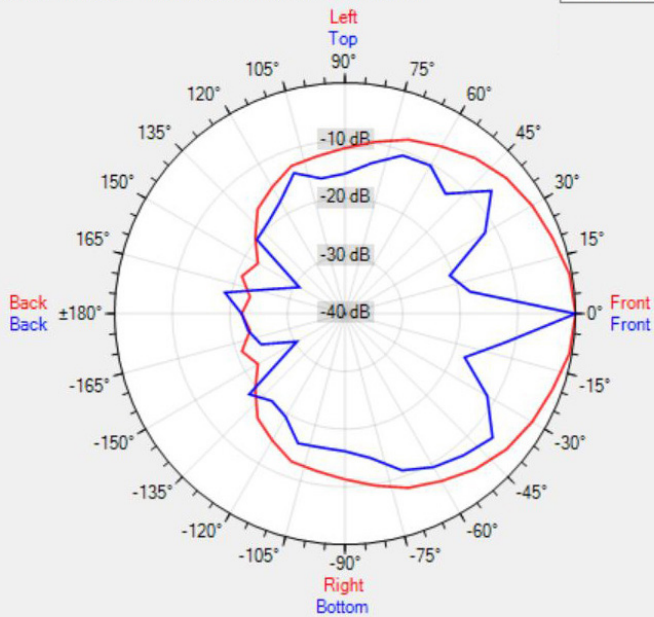
Data Shown: COLS81 (Apart Audio)
Display Parameters: Frequency: 2000Hz (1/24th Octave)

Horizontal
Vertical



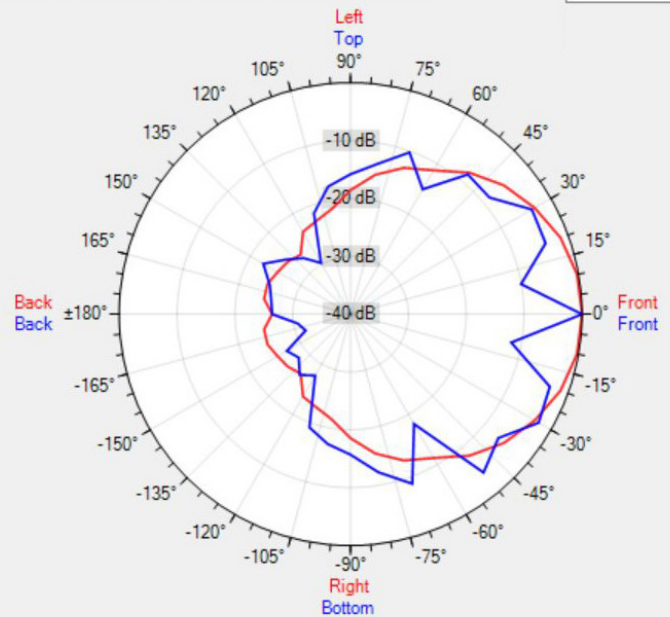
Data Shown: COLS81 (Apart Audio)
Display Parameters: Frequency: 4000Hz (1/24th Octave)

Horizontal
Vertical

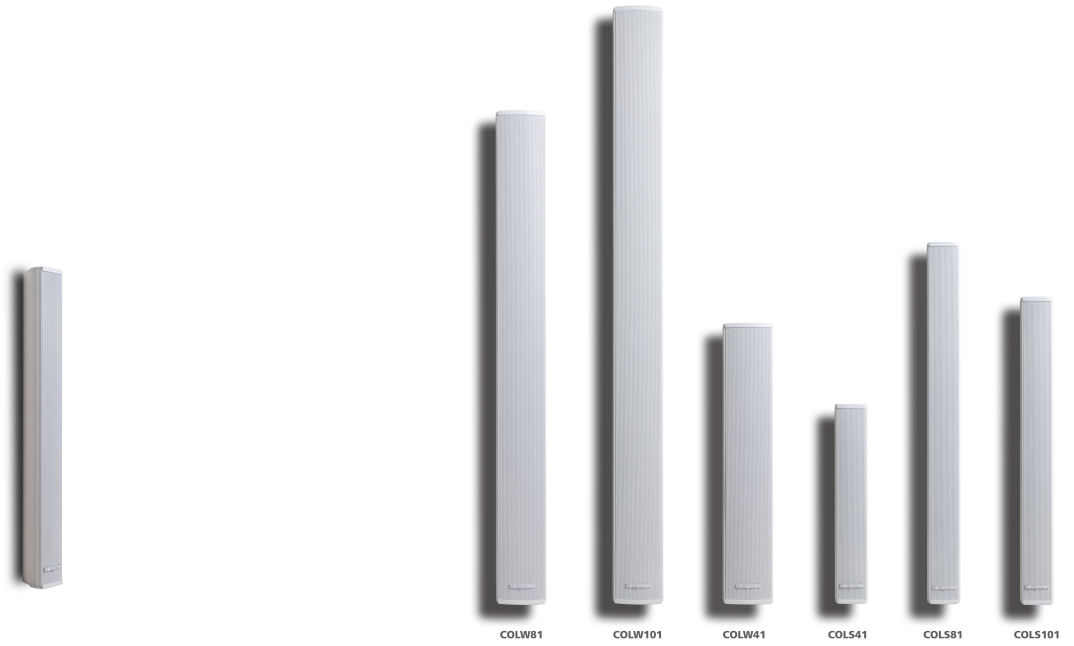


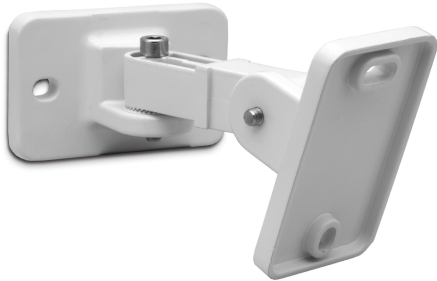
Data Shown: COLS81 (Apart Audio)
Display Parameters: Frequency: 8000Hz (1/24th Octave)

Horizontal
Vertical



MORE PICTURES



ACCESSORIES**COLSBRA**

Bracket for easy tilting and rotating of COLS sound columns